



**XINJIANG ZHONGTAI CHEMICAL CO., LTD.**

**2012**

**2013 2**

2012

2012

2012 1 1 2012 12 31

" " "

[www.cninfo.com.cn](http://www.cninfo.com.cn)

[www.zthx.com](http://www.zthx.com)

..... 12

..... 13

..... 17

..... 21

..... 27

..... 28

..... 31

..... 33

..... 33

..... 35

..... 36

2012

" "

" "

2012

89.77

9.49%

67.28

9.51%

71.13

4.43

80

60

90

90

"

"

150

110

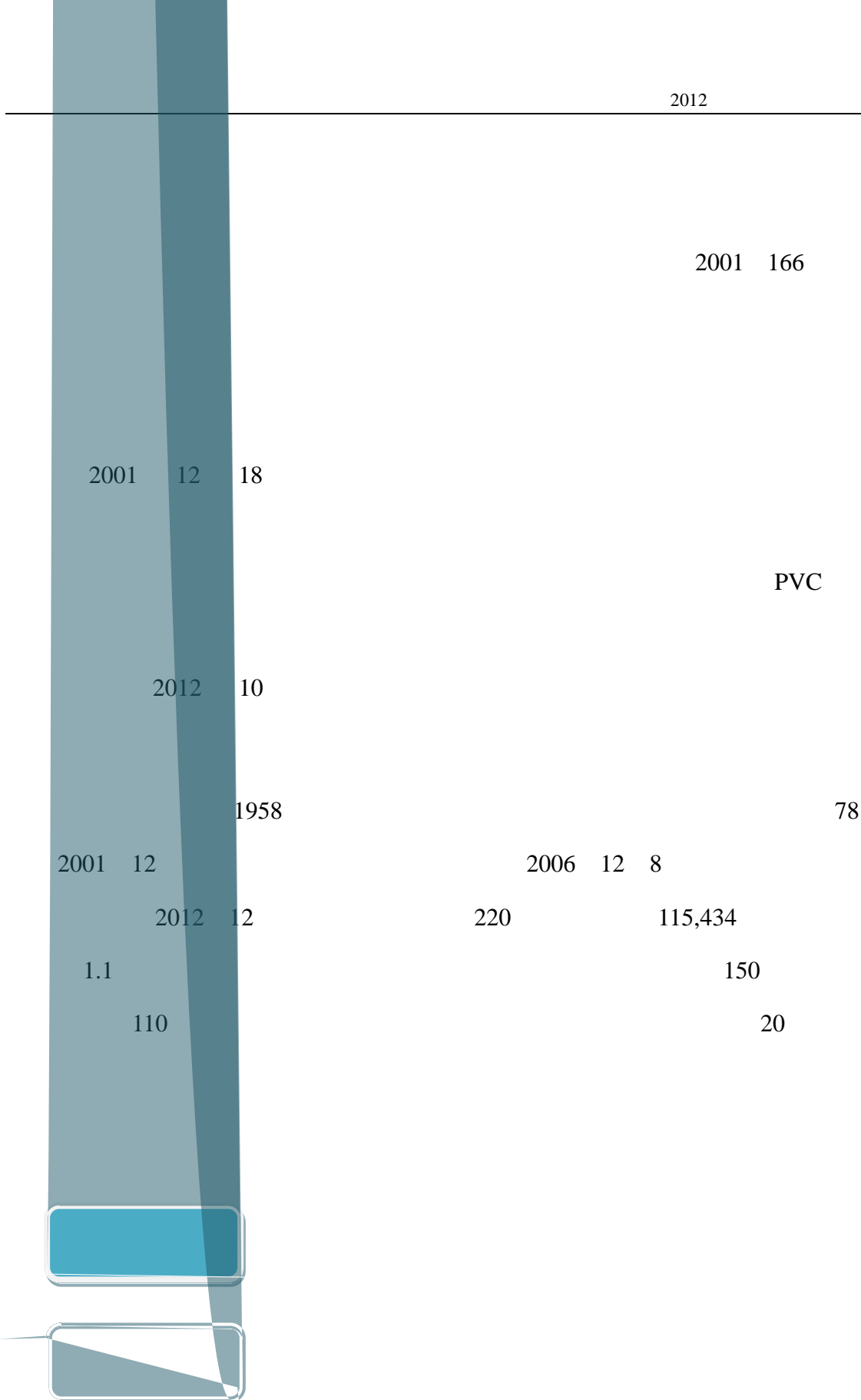
2013

"

"

王世平

2013 2 19



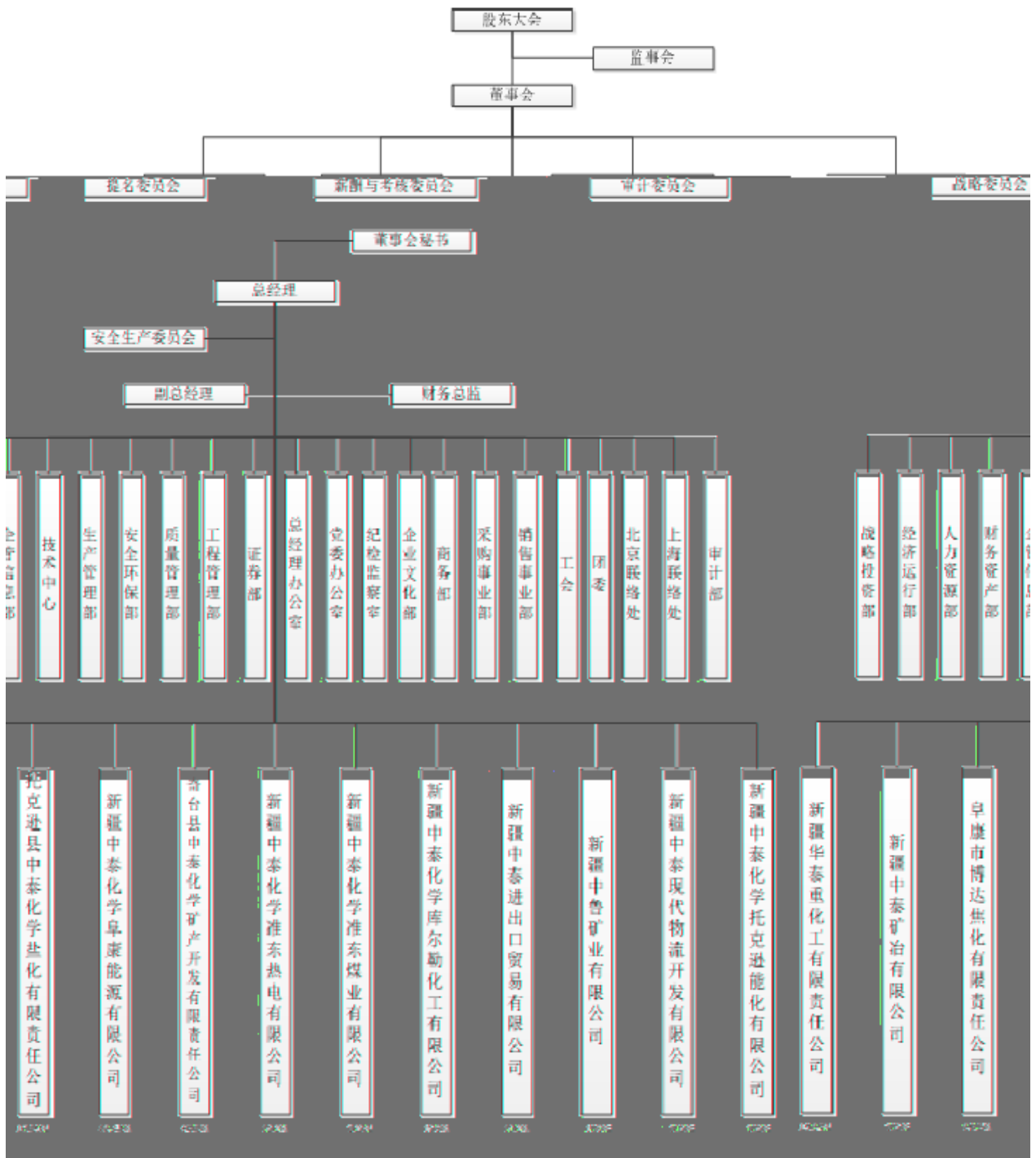
2012

		"
		"

2012 12 31

13

7



1  
2

53.57%



2012 8  
49

2012  
110

2012 400  
40 700

2012 63

<

2012

2012 -2014

10%

30%

13

5 2012

"

"

2012

11

86

6

9

2

5

2 2012

9

26

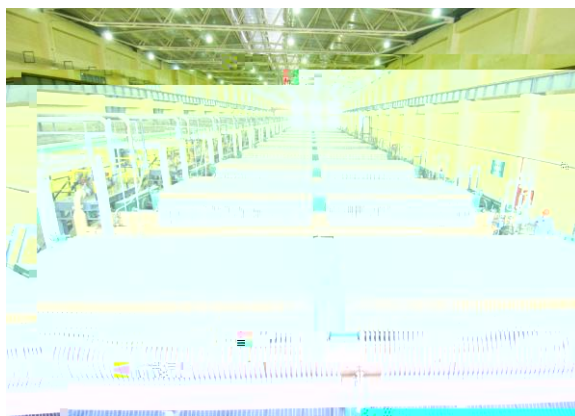
2011 11 3      2012 11 2      2012 11 5

“ “ “ “ “

2010

“ “ “ “ “

“ “



100kwh/T

+

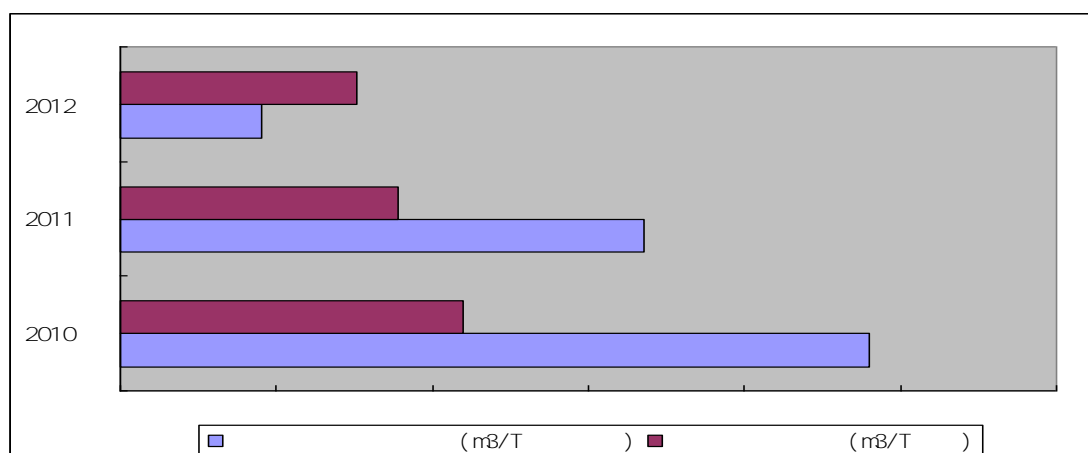
PGW-Turbo

50%

108m<sup>3</sup>

0.6



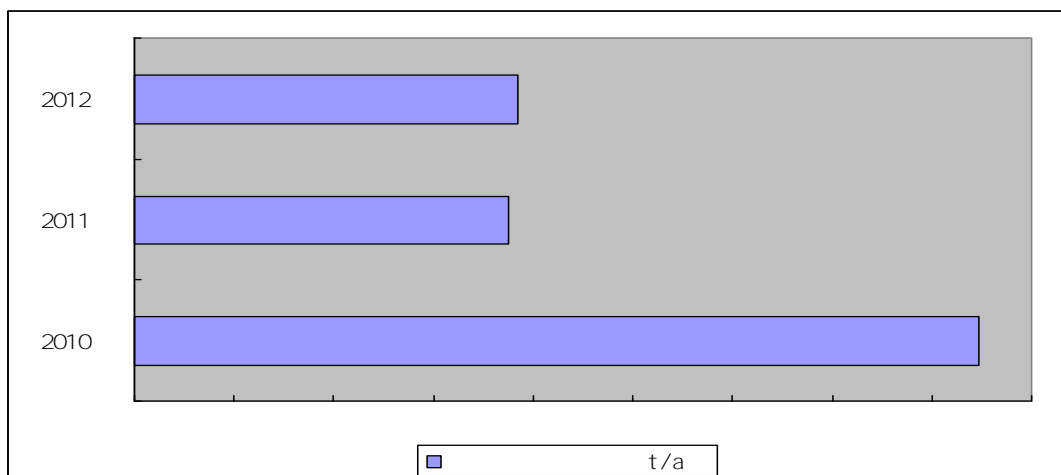
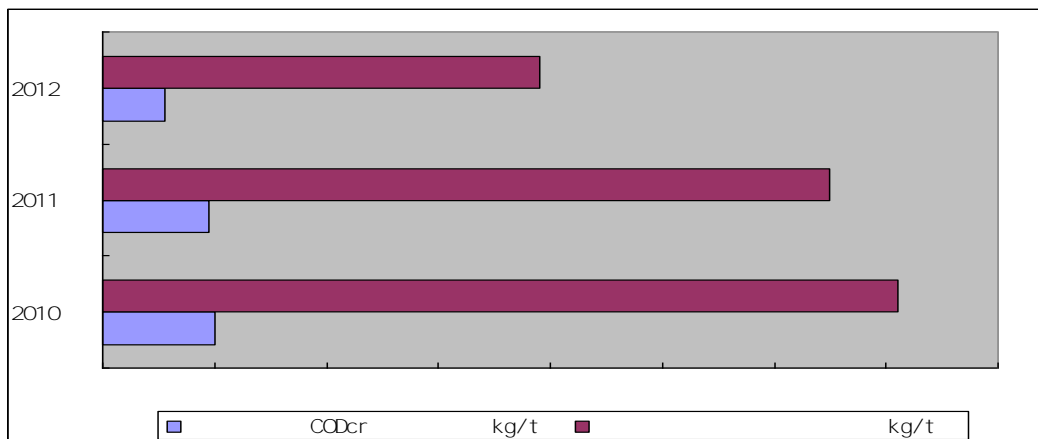


80 ×120

38 m<sup>2</sup>

GB16297-1996

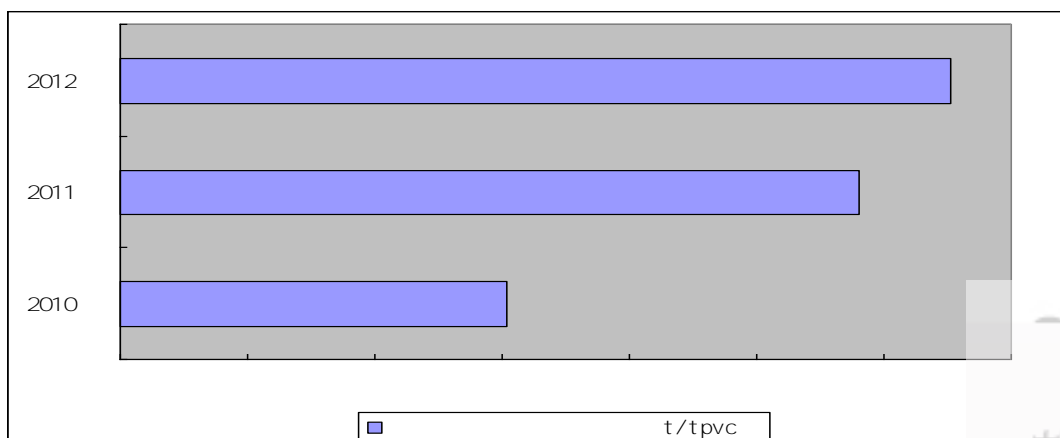
GB13223 2011



85%

2010-2012

T



2012 142,555  
——2012

100%

2012 13,320m<sup>3</sup>  
——2012

74.9m<sup>3</sup>/h  
——2012

33

89.6 m<sup>3</sup>

120 m<sup>3</sup> COD144

2012

2008



---

258 m<sup>3</sup>                      398.9 m<sup>3</sup>/                      60,000

13,169

2012 9                                      3,000

4,400                      500

ISO14000

10 A

40 B

123 C

C

Ô

€

“ ”

2009

2010

98.25%

10

20

2012				500	
39	68	46	15		2012
		3,000			
	"	"			
	2012		780		
	"		"		
		2012		25	
		2010			

" - - "

" "

2011 7

QHSE

2012 1,000

"

"

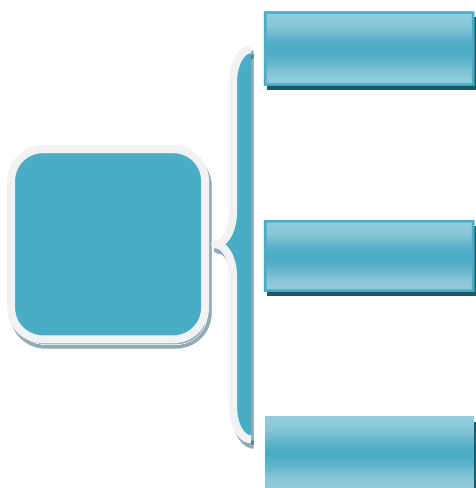
"

"

2012

"

"



2012 16  
2,568.67  
2,343.03  
1,773.3  
3,715.462  
450  
ESD

2012  
4,438.83  
50  
35

2012

10  
5  
2012

2012 7

2012 11

2012

" " "

" "

" "

2012

" "

" "

" "

" "

2012

5

5,269

5,112

97.02%

2012

989

		2012			122
3					
				GB18218-2009	
				"	"
3#					
				HAZOP	
45		212		33	
2012		"	" "	" "	"
					2012
		12,343		163,027	
	12	938		9	1,170





		100		80	
6,000				2012	8
	13				
					" "
"		"	2012		
			" "		
				2012	
		13,918		400	
169	362		13,387		
					"
	"				
	2012			14	
8		45		90	
405		43			

"

"

100%

"

"

100%

"

"

100% 2012

2011

300

2012

195

100%

2012

2012

5.28

0.69

2012 12 15

2012

5

6

"

"

"

"

"

"



		2012		140
	19	13	16	
11				
2012				
	11			
		2013	4	"
"				
				2012
	100			

2012

2012

36

10

2012

"

"

2012

"

"

2012

"

"

54

2012

"

"

"

"

"

"

100



2012

2012

2012

2012

"

50

"

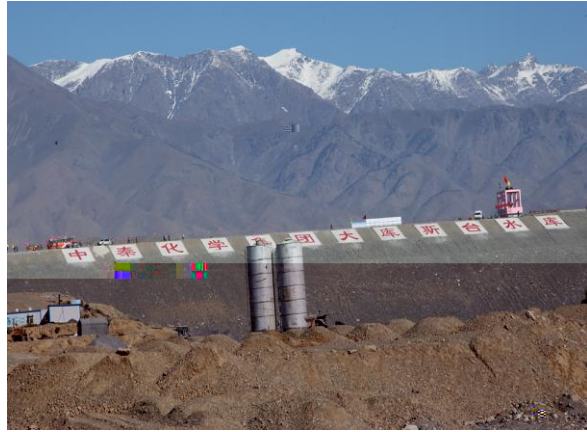
"

50

"



2010 9 4,200  
 9 27  
 3.46  
 1



268

" "

2012 10

2010 30

2012

2012

2

2012

200

2012

10

2011

100

"

" 2012

20

"

"

"

"

2012

17

"

"

"

"

“ ”

2012

ISO9001

”

”

ISO9001

**2013**

2012

2013

2013

"

"

"

"

“ ”

“ ”

80 90

“ ”

“ ”

2013